

AN ISO 9001:2015 CERTIFIED COMPANY

SHAYONA LED®
Bright Like Your Future



CE RoHS

CATALOGUE
2025

PREMIUM

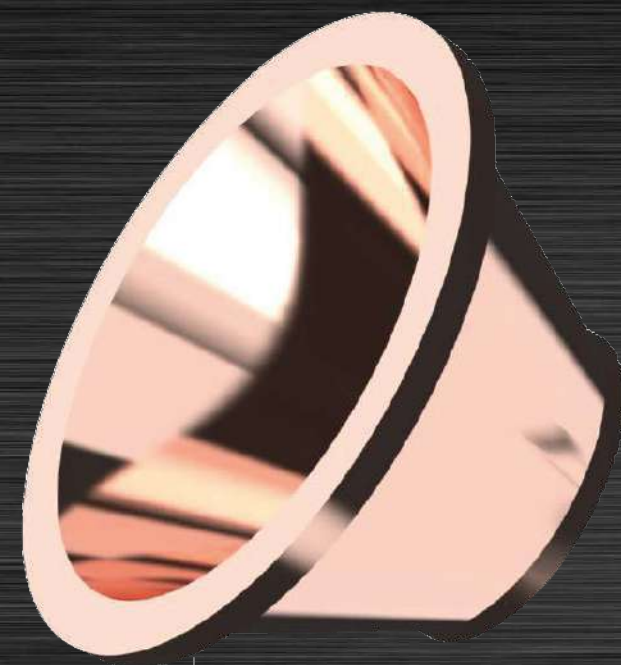
P

O

L

O

COB SERIES



Cup

Glass

COB Chip

Housing

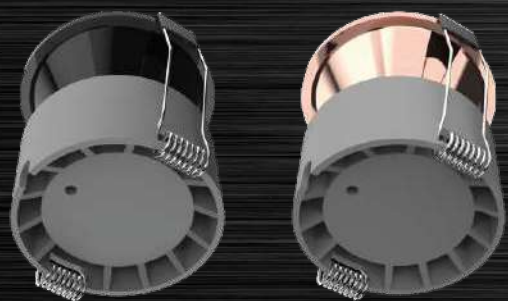
Spring



Experience the next level of lighting with the Premium Polo COB Series from SHAYONA LED Lighting Housing. Designed with precision engineering, this series offers unmatched brightness and clarity, creating a stunning visual experience. Featuring advanced COB technology, the Premium Polo Series delivers high luminous efficiency and superior color rendering, perfect for highlighting spaces with true-to-life colors and textures. Encased in a sleek, durable housing, these lights are built to last and add a touch of elegance to any interior. Ideal for upscale commercial settings and sophisticated residential designs, the Premium Polo COB Series redefines modern lighting solutions.



PREMIUM
POLO
COB
Light



Watt	Dimension	Cutout	Beam Angel	CRI	Lumens
7W	65x45H MM	55MM	36°	>80	630
12W	80x50H MM	70MM	36°	>80	1080

Body Color



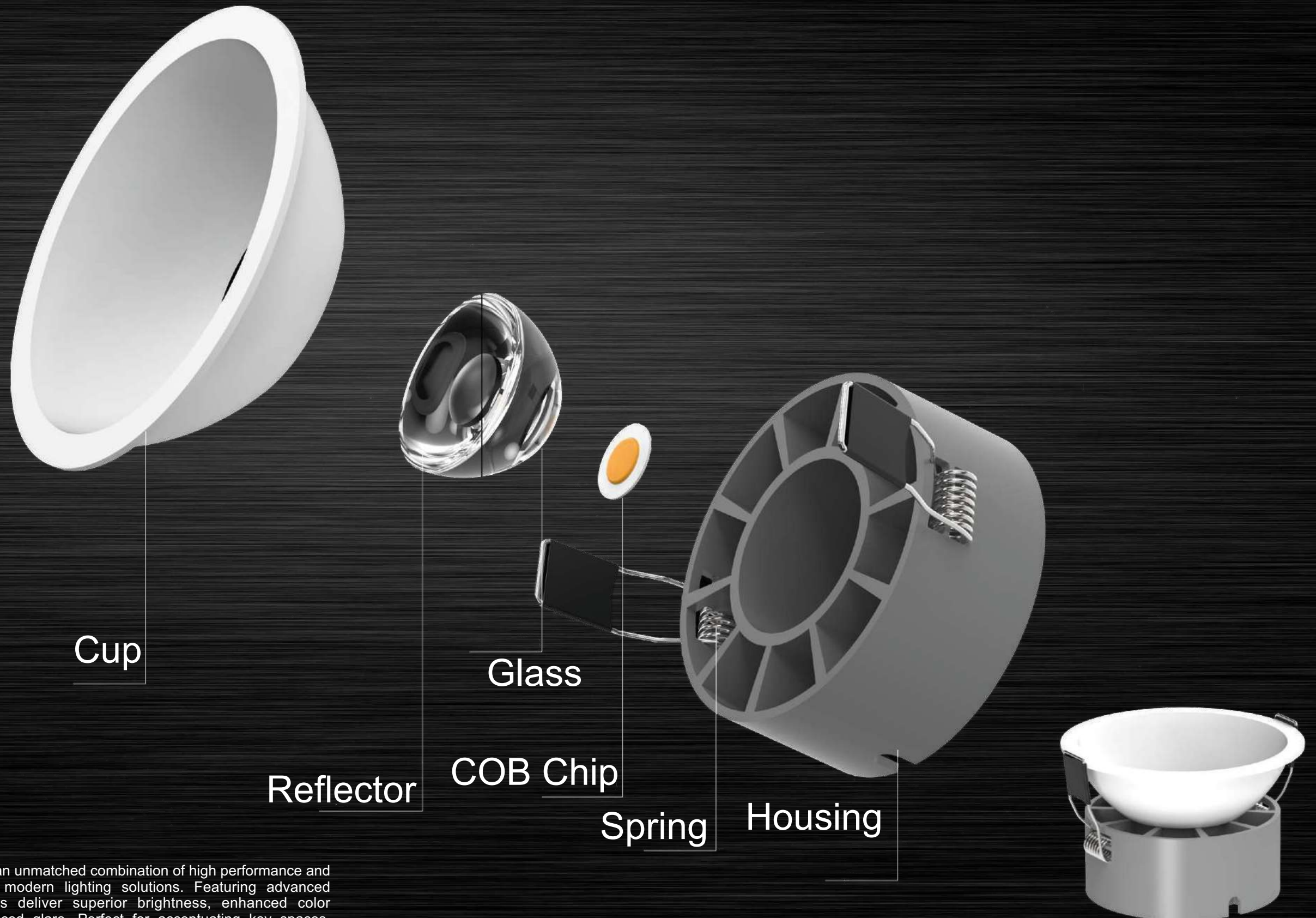
Reflector Color



Light CCT



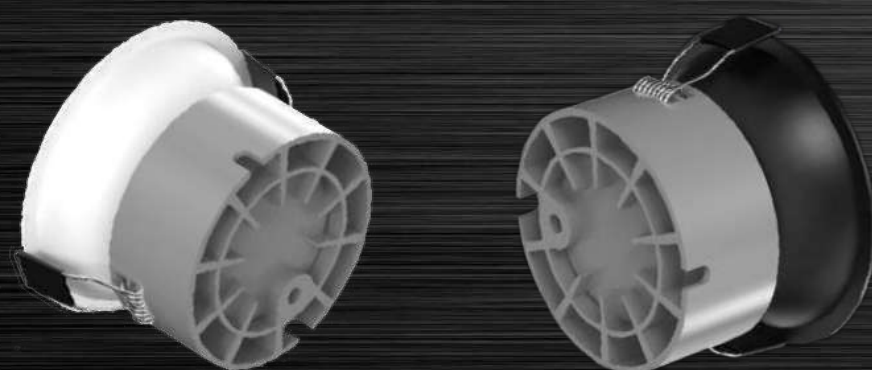
P
O
L
O
COB
SERIES



The Polo COB series from SHAYONA LED offers an unmatched combination of high performance and sleek design, making it the ideal choice for modern lighting solutions. Featuring advanced Chip-On-Board (COB) technology, these lights deliver superior brightness, enhanced color rendering, and consistent illumination with reduced glare. Perfect for accentuating key spaces, the Polo COB lights are designed for energy efficiency without compromising on style. Whether in residential, commercial, or retail settings, the Polo COB series adds a touch of elegance with its minimalist design and powerful lighting output.

AN ISO 9001:2015 CERTIFIED COMPANY

SHAYONA LED®
Bright Like Your Future



POLO
COB
Light

Watt	Dimension	Cutout	Beam Angel	CRI	Lumens
7W	65x45H MM	55MM	36°	>80	630
12W	80x50H MM	70MM	36°	>80	1080

Body Color



Reflector Color



Light CCT

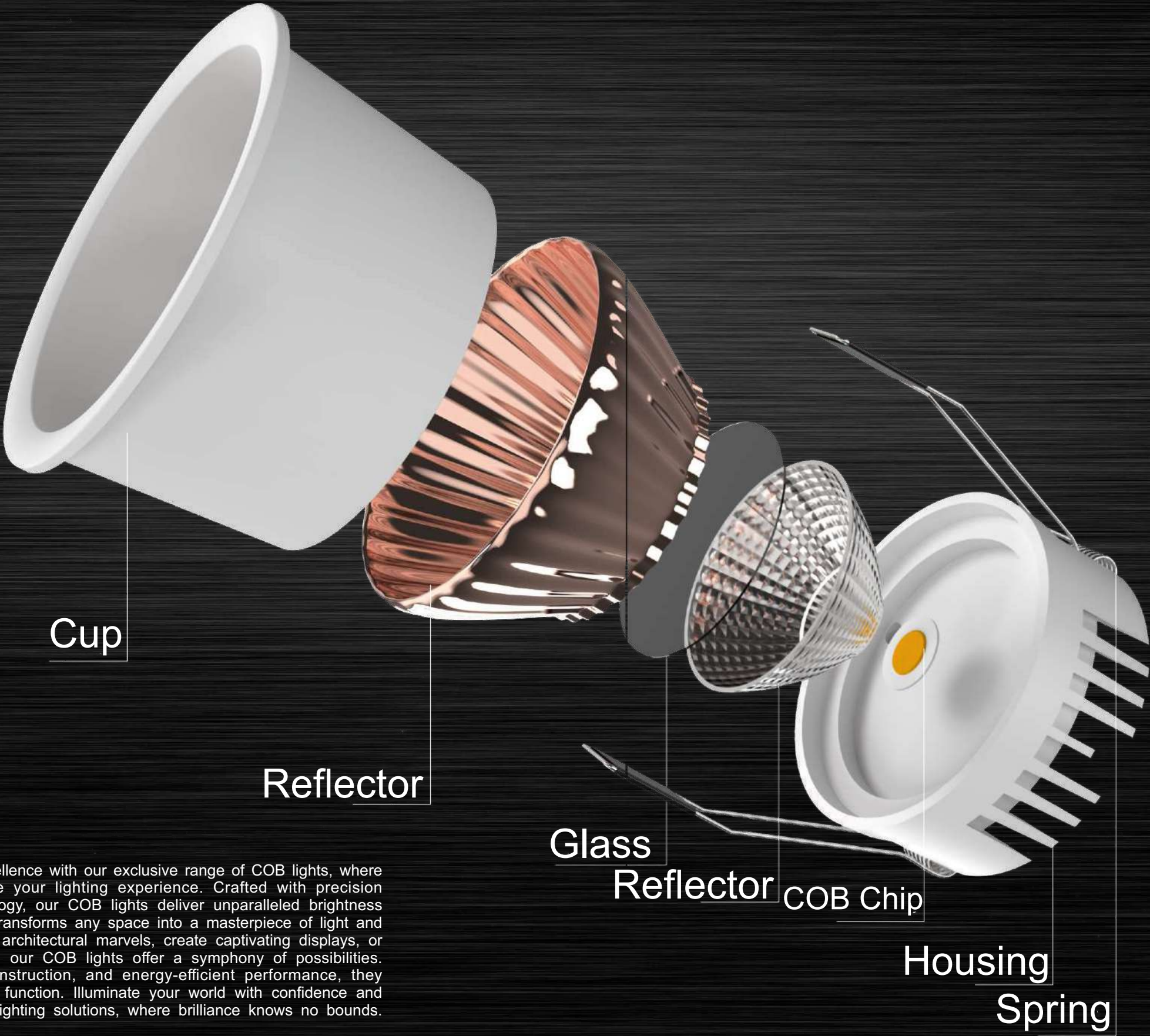
3k

4k

5k



A
L
F
A
COB
SERIES



Embark on a journey of illumination excellence with our exclusive range of COB lights, where innovation meets elegance to redefine your lighting experience. Crafted with precision engineering and state-of-the-art technology, our COB lights deliver unparalleled brightness and clarity, casting a radiant glow that transforms any space into a masterpiece of light and shadow. Whether you seek to highlight architectural marvels, create captivating displays, or simply brighten everyday environments, our COB lights offer a symphony of possibilities. With effortless installation, durable construction, and energy-efficient performance, they embody the perfect fusion of form and function. Illuminate your world with confidence and sophistication using our premium COB lighting solutions, where brilliance knows no bounds.

AN ISO 9001:2015 CERTIFIED COMPANY

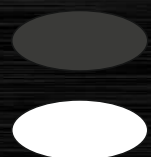
SHAYONA LED®
Bright Like Your Future



POLO
COB
Light

Watt	Dimension	Cutout	Beam Angel	CRI	Lumens
7W	70x55H MM	60MM	38°	>80	630
12W	80x66H MM	72MM	38°	>80	1080
18W	90x80H MM	82MM	38°	>80	1620

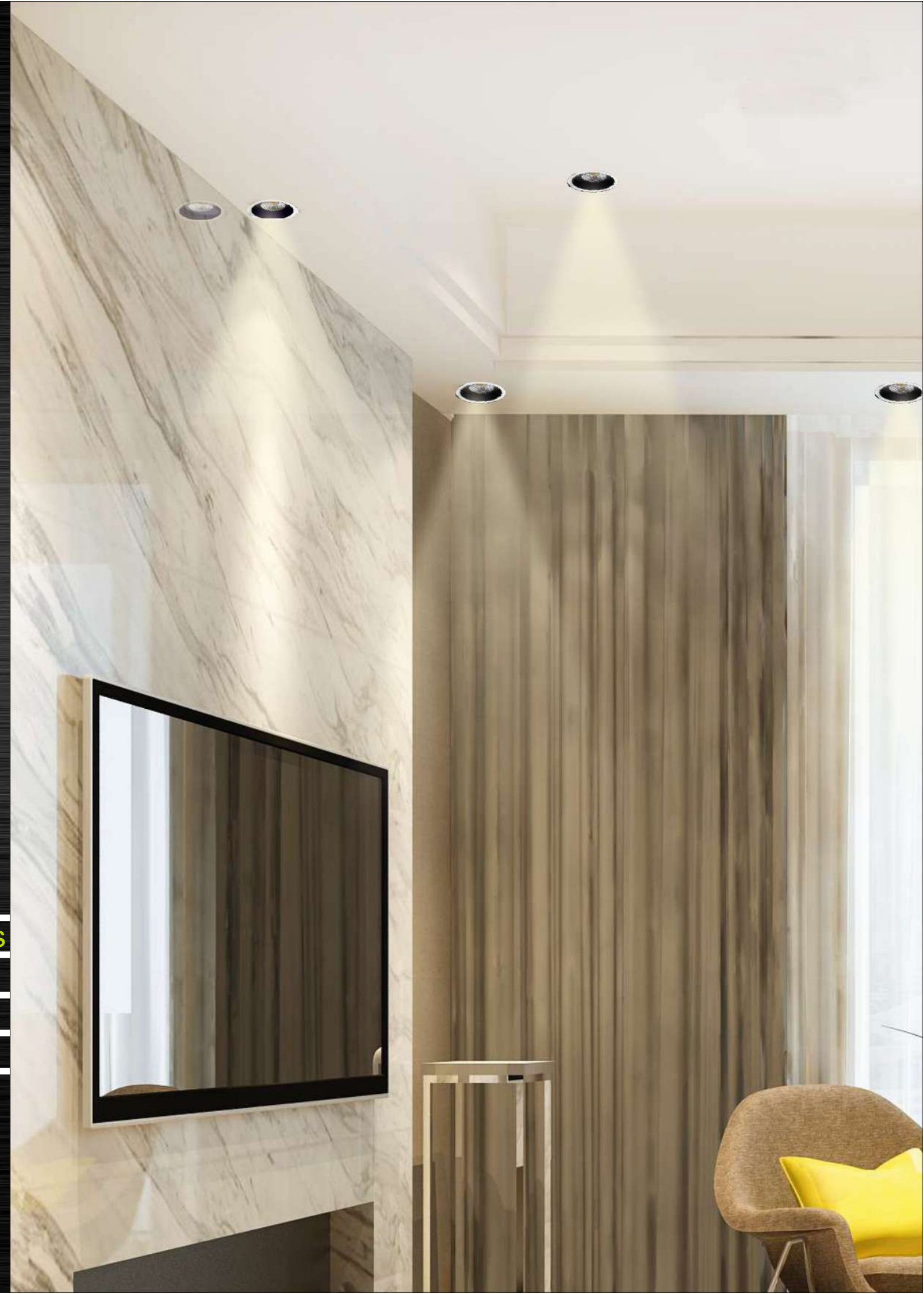
Body Color



Reflector Color



Light CCT



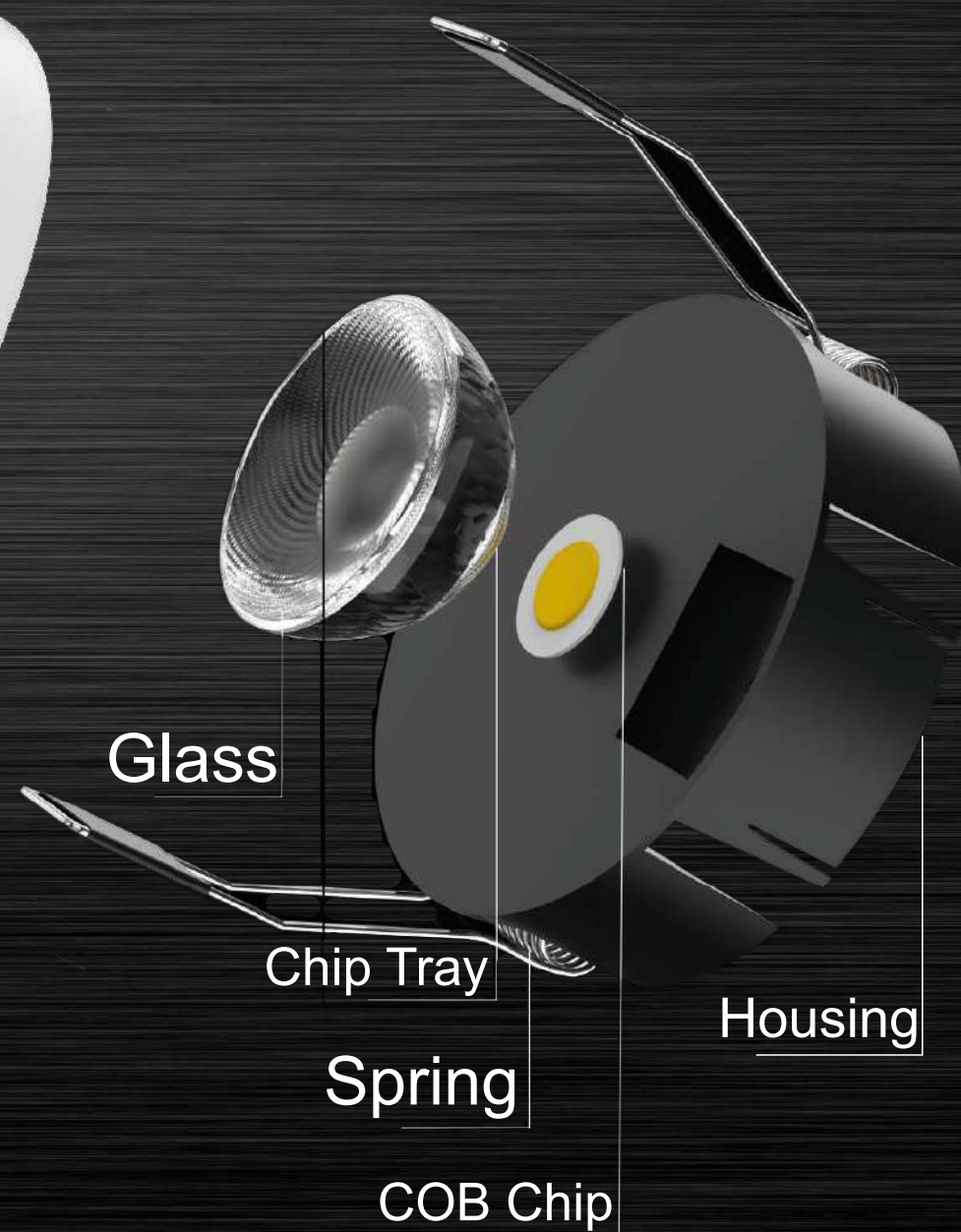
AN ISO 9001:2015 CERTIFIED COMPANY

SHAYONA LED®
Bright Like Your Future

V
E
G
A
COB
SERIES



Cup



Introducing the Vega Model, a pinnacle of modern lighting technology that combines efficiency with style. Designed with cutting-edge Chip-on-Board (COB) technology, this light offers superior brightness and uniform illumination, making it perfect for both residential and commercial applications. The sleek, minimalist design seamlessly integrates into any decor, while its adjustable features allow for versatile lighting angles. With a long lifespan and low energy consumption, the Vega Model not only enhances your space but also promotes sustainability. Illuminate your world with the brilliance and elegance of the Vega Model—where performance meets aesthetic appeal.



VEGA
COB
Light

Watt	Dimension	Cutout	Beam Angel	CRI	Lumens
7W	70x60H MM	60MM	36°	>80	630
12W	86x66H MM	74MM	36°	>80	1080

Body Color


Reflector Color


Light CCT

3k

4k

5k



AN ISO 9001:2015 CERTIFIED COMPANY

SHAYONA LED®
Bright Like Your Future

B
E
A
T
COB
SERIES



Embrace versatility and superior performance with our range of COB (Chip-on-Board) lights, designed to elevate your lighting experience to new heights. With cutting-edge technology and a commitment to excellence, our COB lights offer exceptional brightness and energy efficiency, making them ideal for a wide array of applications. Whether you're illuminating a commercial space, enhancing outdoor landscapes, or adding ambiance to residential interiors, our COB lights deliver unparalleled quality and reliability. Explore our diverse selection of COB lights to find the perfect match for your needs, and illuminate your world with brilliance and confidence.



BEAT
COB
Light

Watt	Dimension	Cutout	Beam Angel	CRI	Lumens
7W	70x50H MM	60MM	36°	>80	630
12W	85x66H MM	75MM	36°	>80	1080
18W	95x76H MM	85MM	36°	>80	1620

Body Color



Reflector Color



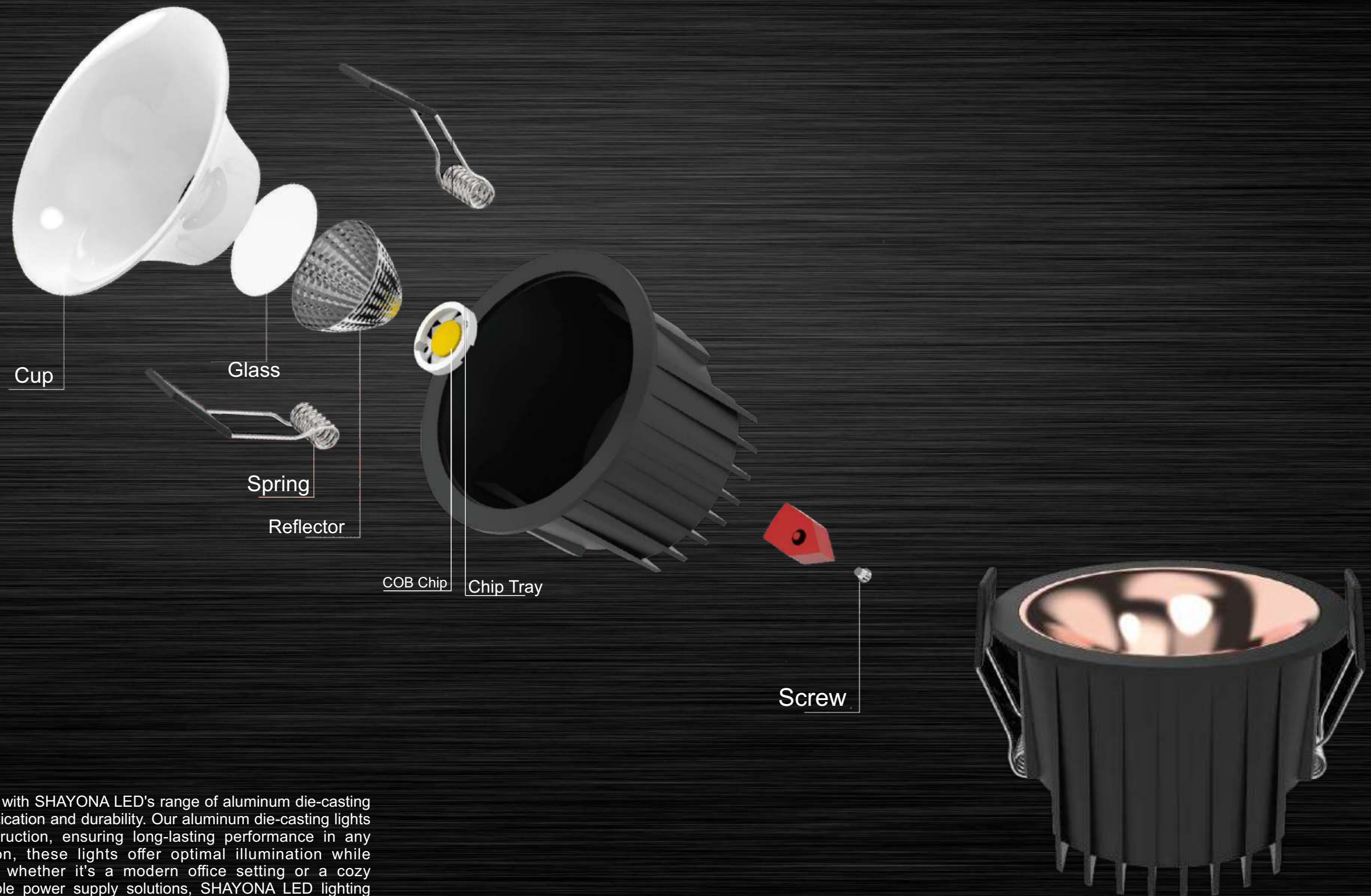
Light CCT



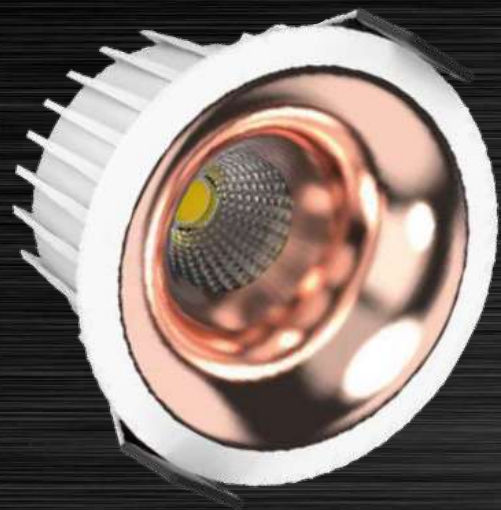
AN ISO 9001:2015 CERTIFIED COMPANY

SHAYONA LED®
Bright Like Your Future

S
H
I
N
E
COB
SERIES



Discover the pinnacle of lighting innovation with SHAYONA LED's range of aluminum die-casting lights, meticulously crafted to exude sophistication and durability. Our aluminum die-casting lights combine sleek design with robust construction, ensuring long-lasting performance in any environment. Engineered with precision, these lights offer optimal illumination while seamlessly integrating into any space, whether it's a modern office setting or a cozy residential environment. Paired with reliable power supply solutions, SHAYONA LED lighting guarantees uninterrupted brilliance, providing a lighting experience that exceeds expectations. Illuminate your surroundings with confidence and style with SHAYONA LED's aluminum die-casting lights and dependable power supply options.

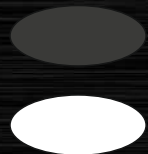


SHINE
COB
Light



Watt	Dimension	Cutout	Beam Angel	CRI	Lumens
7W	67x55H MM	55MM	36°	>80	630
12W	82x60H MM	72MM	36°	>80	1080
18W	97x68H MM	85MM	36°	>80	1620

Body Color



Reflector Color



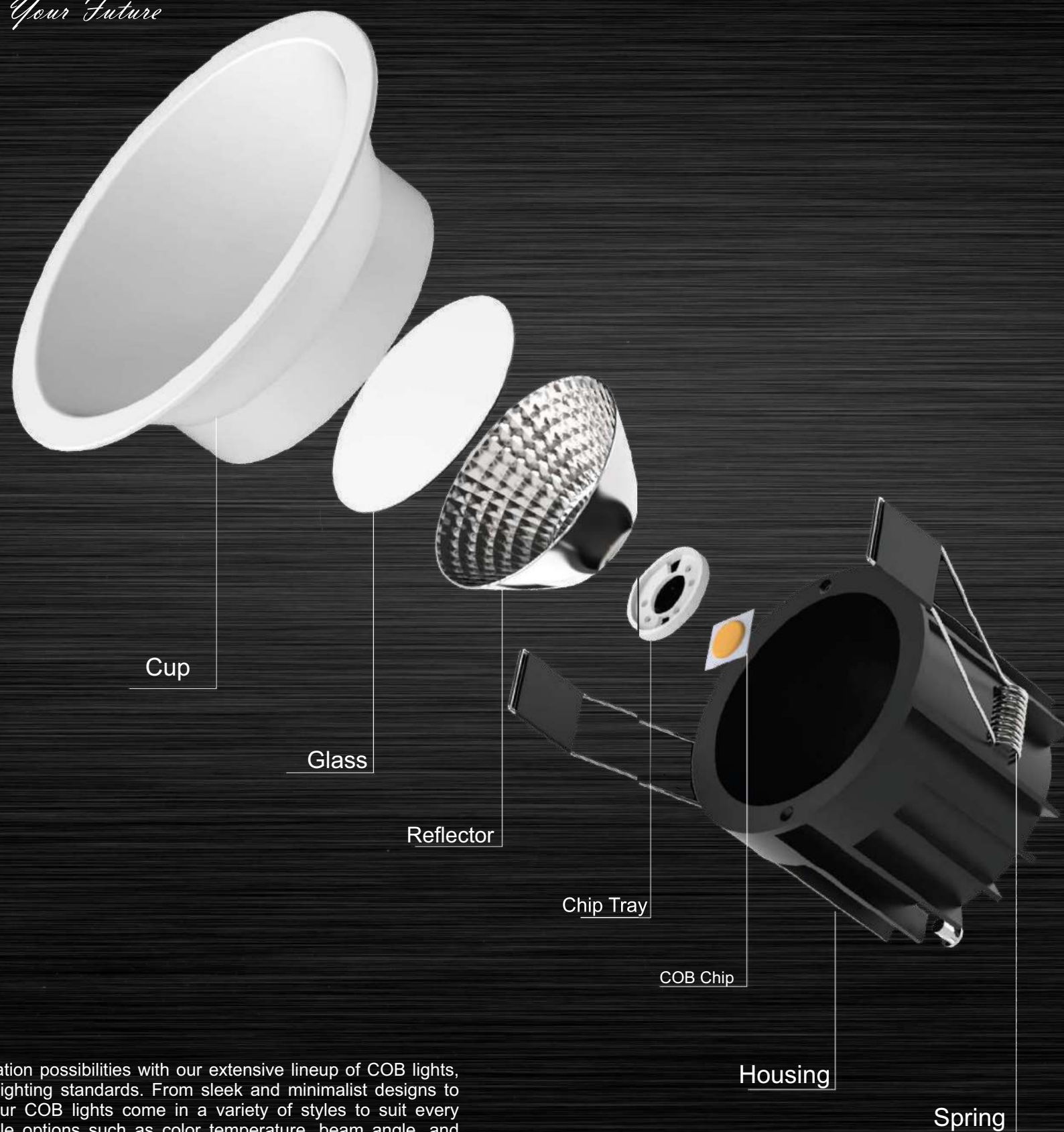
Light CCT



AN ISO 9001:2015 CERTIFIED COMPANY

SHAYONA LED®
Bright Like Your Future

DELT
A
COB
SERIES



Step into a realm of boundless illumination possibilities with our extensive lineup of COB lights, each meticulously crafted to redefine lighting standards. From sleek and minimalist designs to bold and statement-making fixtures, our COB lights come in a variety of styles to suit every aesthetic preference. With customizable options such as color temperature, beam angle, and dimming capabilities, you have the freedom to create the perfect ambiance for any setting. Whether you're illuminating retail spaces, accentuating architectural features, or setting the stage for memorable events, our COB lights offer unmatched versatility and performance. Elevate your lighting game with our premium COB lighting solutions and let your creativity shine.



DELTA
COB
Light

Watt	Dimension	Cutout	Beam Angel	CRI	Lumens
7W	63x60H MM	55MM	38°	>80	630
12W	82x75H MM	72MM	38°	>80	1080
18W	95x97H MM	83MM	38°	>80	1620

Body Color



Reflector Color



Light CCT



AN ISO 9001:2015 CERTIFIED COMPANY

SHAYONA LED®
Bright Like Your Future

DELTA
RING
COB
SERIES



Embark on a journey of illumination excellence with our exclusive range of COB lights, where innovation meets elegance to redefine your lighting experience. Crafted with precision engineering and state-of-the-art technology, our COB lights deliver unparalleled brightness and clarity, casting a radiant glow that transforms any space into a masterpiece of light and shadow. Whether you seek to highlight architectural marvels, create captivating displays, or simply brighten everyday environments, our COB lights offer a symphony of possibilities. With effortless installation, durable construction, and energy-efficient performance, they embody the perfect fusion of form and function. Illuminate your world with confidence and sophistication using our premium COB lighting solutions, where brilliance knows no bounds.



DELTA
Ring
COB
Light

Watt	Dimension	Cutout	Beam Angel	CRI	Lumens
7W	65x58H MM	55MM	36°	>80	630
12W	84x68H MM	72MM	36°	>80	1080

Body Color



Reflector Color



Light CCT





SELTOS
COB
Light

Watt	Dimension	Cutout	Beam Angel	CRI	Lumens
7W	53x61H MM	45MM	36°	>80	630
12W	63x71H MM	55MM	36°	>80	1080
18W	83x83H MM	70MM	36°	>80	1620

Body Color

Reflector Color

Light CCT

3k

4k

5k





MAGIC
COB
Light

Watt	Dimension	Cutout	Beam Angel	CRI	Lumens
12W	83x90H MM	75MM	48°	>80	630
18W	83x90H MM	75MM	48°	>80	1080

Body Color



Reflector Color



Light CCT

3k

4k

5k





LUX
COB
Light

Watt	Dimension	Cutout	Beam Angel	CRI	Lumens
12W	83x80H MM	75MM	48°	>80	630
18W	83x80H MM	75MM	48°	>80	1080

Body Color



Reflector Color



Light CCT

3k

4k

5k





STAR
COB
Light

Watt	Dimension	Cutout	Beam Angel	CRI	Lumens
7W	62x83H MM	55MM	38°	>80	630
18W	72x95H MM	65MM	38°	>80	1080
18W	82x100H MM	75MM	38°	>80	1620

Body Color



Reflector Color



Light CCT





BUZZ
COB
Light

Watt	Dimension	Cutout	Beam Angel	CRI	Lumens
7W	80x60H MM	75MM	36°	>80	630
12W	80x60H MM	75MM	36°	>80	1080

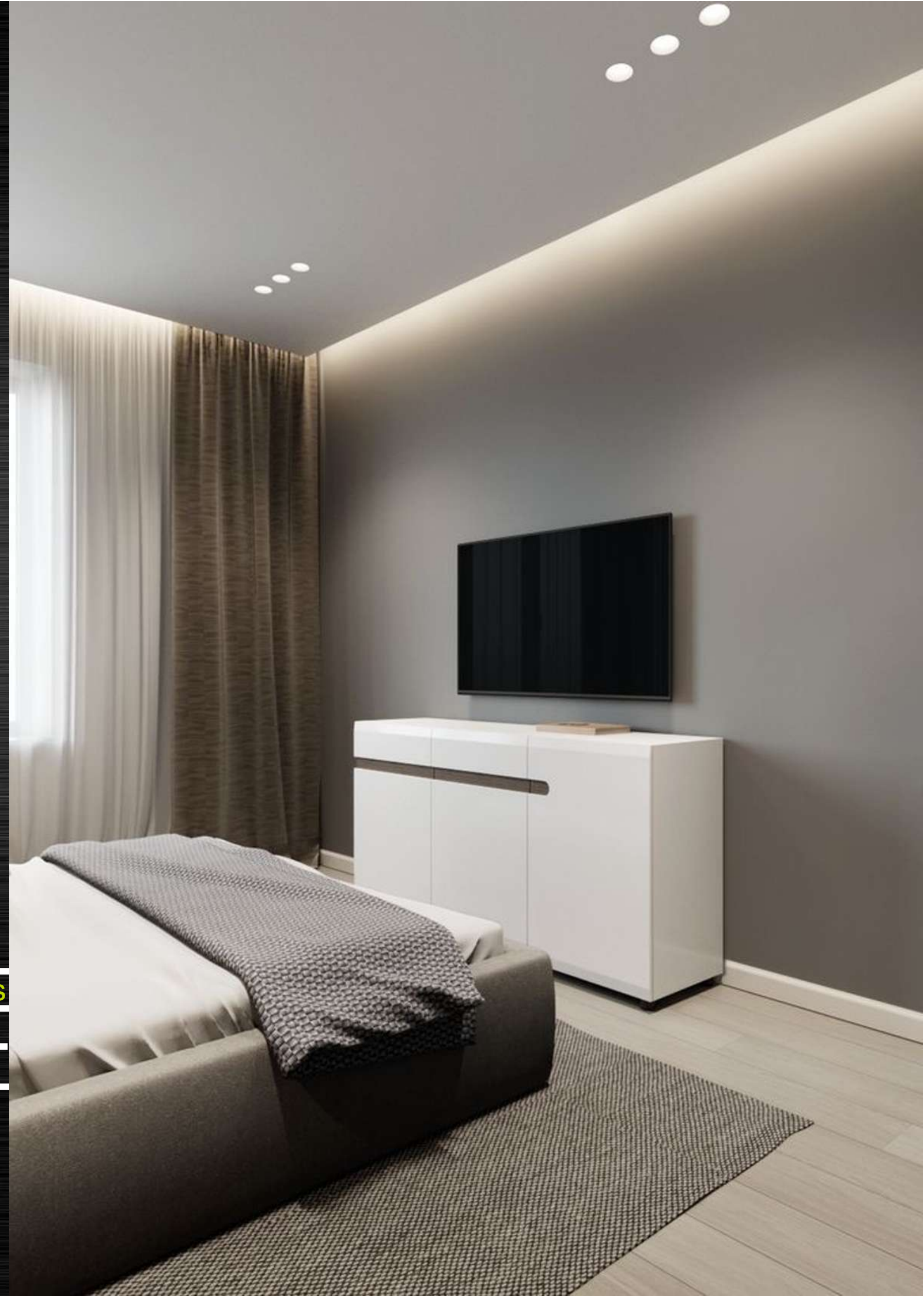
Body Color



Reflector Color



Light CCT





BREZZA
COB
Light

Watt	Dimension	Cutout	Beam Angel	CRI	Lumens
12W	65x75H MM	55MM	60°	>80	1080
18W	85x81H MM	75MM	60°	>80	1620
24W	105x95H MM	95MM	60°	>80	2160

Body Color	Reflector Color	Light CCT
Black	Black, White	3k
	Grey, Brown	4k
	Red	5k





NIYO
COB
Cylinder
Light

Watt	Dimension	Cutout	Beam Angel	CRI	Lumens
7W	58x66H MM	-	38°	>80	630
12W	68x80H MM	-	38°	>80	1080
18W	76x96H MM	-	38°	>80	1620

Body Color



Reflector Color



Light CCT





CYLINDER
COB
Light

Watt	Dimension	Cutout	Beam Angel	CRI	Lumens
7W	55x75H MM	-	38°	>80	630
12W	55x100H MM	-	38°	>80	1080
18W	72x100H MM	-	38°	>80	1620

Body Color



Reflector Color



Light CCT





MOVABLE Cylinder

Watt	Dimension	Cutout	Beam Angel	CRI	Lumens
7W	55x75H MM	-	38°	>80	630
12W	55x100H MM	-	38°	>80	1080
18W	72x100H MM	-	38°	>80	1620

Body Color



Reflector Color



Light CCT



AN ISO 9001:2015 CERTIFIED COMPANY

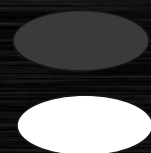
SHAYONA LED®
Bright Like Your Future



NOVO
Cylinder
Light

Watt	Dimension	Cutout	Beam Angel	CRI	Lumens
7W	56x75H MM	-	38°	>80	630
12W	70x90H MM	-	38°	>80	1080
18W	85x100H MM	-	38°	>80	1620

Body Color



Reflector Color



Light CCT





DEEP DOWN
Light

Watt	Dimension	Cutout	Beam Angel	CRI	Lumens
12W	120x50H MM	105MM	110°	>80	1440
18W	155x50H MM	140MM	110°	>80	2160

Body Color



Light CCT





MINI LENIA Light

Watt	Dimension	Cutout	Beam Angel	CRI	Lumens
5W	68x30H MM	62 X 22MM	36°	>80	450
12W	125x30H MM	118 X 22MM	36°	>80	1080
24W	240x30H MM	236 X 22MM	36°	>80	2160

Body Color



Reflector Colour



Light CCT





TRACK
Light

Watt	Dimension	Cylinder	Beam Angel	CRI	Lumens
10W	50x120H MM	100 MM	36°	>80	900
20W	60x160H MM	135 MM	36°	>80	1800
30W	80x145H MM	150 MM	36°	>80	2700
40W	90x160H MM	180 MM	36°	>80	3600

Body Color



Light CCT



AN ISO 9001:2015 CERTIFIED COMPANY

SHAYONA LED®
Bright Like Your Future



MOVABLE LINEAR

LENGTH
1 Feet / 2 Feet



PROFILE LIGHT

LENGTH
1 Feet / 2 Feet



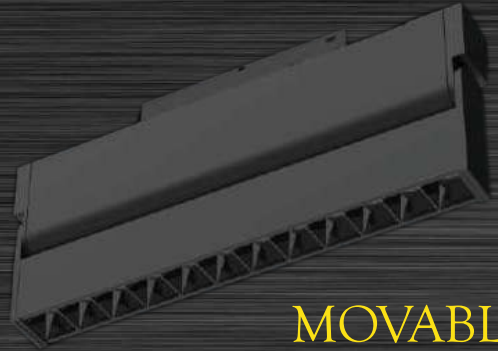
NON MOVABLE LINEAR

LENGTH
1 Feet / 2 Feet

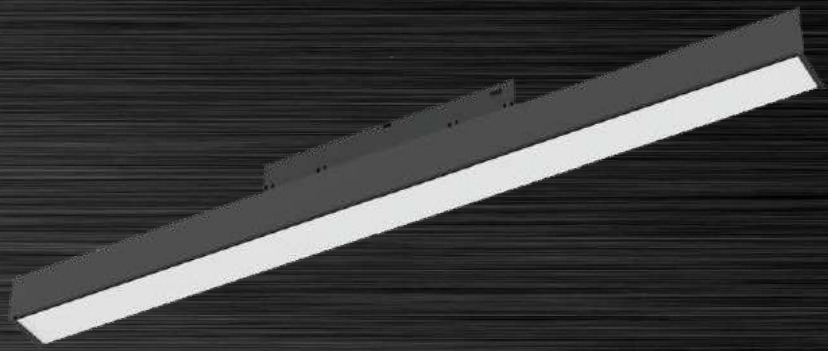


TRACK LIGHT



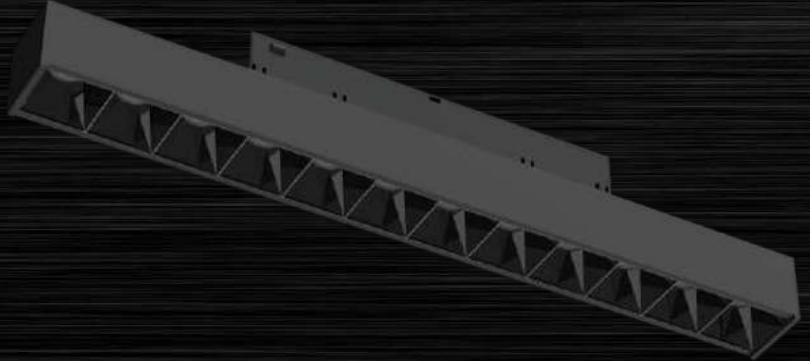


MOVABLE
LINEAR



PROFILE
LIGHT

NON MOVABLE
LINEAR



TRACK
LIGHT



AN ISO 9001:2015 CERTIFIED COMPANY

SHAYONA LED®

Bright Like Your Future



SYN-01
LENGTH
1 Feet / 2 Feet



SYN-02
LENGTH
1 Feet / 2 Feet



SYN-03
LENGTH
1 Feet / 2 Feet



SYN-04
LENGTH
1 Feet / 2 Feet



SYN-05
LENGTH
1 Feet / 2 Feet



SYN-06
LENGTH
1 Feet / 2 Feet



SYN-07
LENGTH
1 Feet / 2 Feet



SYN-08
LENGTH
1 Feet / 2 Feet



SYN-09
LENGTH
1 Feet / 2 Feet



AN ISO 9001:2015 CERTIFIED COMPANY

SHAYONA LED[®]
Bright Like Your Future



TOP POST LIGHT
SYN-01



TOP POST LIGHT
SYN-02



AN ISO 9001:2015 CERTIFIED COMPANY

SHAYONA LED®
Bright Like Your Future



SYN-WL-01



SYN-WL-02
LENGTH
1 Feet / 2 Feet
3 Feet / 4 Feet



SHAYONA TECHNOLOGY.

An ISO 9001:2015 Certified Company

Address : Plot No. H-522 GIDC Phase - 2 Dared
Jamnagar (Gujarat) India.-361104

Ⓜ : www.shayona-led.com

✉ : sales@shayona-led.com

☎ : +91 9512454242 / 8511117520

